

# Auto Lensmeter

## HLM6047



**Hans Heiss**



**OFFICIAL DISTRIBUTOR**  
**MERCOFRAMES OPTICAL CORP**

5555 NW 74 Ave. Miami, FL 33166. United States

Phone: 305-882-0120

[sales@mercoframes.net](mailto:sales@mercoframes.net)

[www.mercoframes.com](http://www.mercoframes.com)

## FEATURES

- 7.0-inch high-definition touch color LCD display.
- Upgraded Hartmann intelligent measurement technology, faster, more accurate and stable.
- Streamlined, stylish, absolute and atmospheric design.
- Food grade ABS material shell, zero failure rate quality standard.
- Green LED source without ABBE coefficient compensation.
- Automatically identify and measure various lenses, high refractive index, polarized light, etc.
- Determine and measure progressive lenses quickly, automatically, and with high precision.
- Distance and height measurement: The display shows an electronic rangefinder for quick and easy measurements.

### Hartmann Sensor with 145 Multiple Measurement Points

Hartmann 145 sense points, equipped with high speed and high efficiency CCD camera, fast and accurate measurement, don't need ABBE compensation.

### Newly Developed Marking Pins

Red and white ink dot specifications:

0.8mm / 1.0mm / 1.2mm / 1.5mm.

The smooth markings are perfect and the points are clear and round.

### Quick and Easy Data Transfer

• 1 USB port and 1 RS232 component, can be connected to the computer.

• Realize data transmission storage or share with other instruments, also can be used to charge your phone.





### Progressive Lens Measurement

Automatically identify the lens type (single lens or progressive):

- Single lens, fast positioning lens for long distance center and close center
- Progressive lens, accurately measure ADD value.



### Frame VD Measurement

Confirm the PD and mark the left and right lens centers at first; then align the frame with the digital PD scale in the display and move it gradually; Adjust the ruler up/down and coincides with the center of the left and right lenses. The data displayed is the frame VD value.



### UV/BLUE Measure

Measuring the UV transmittance of various lenses (coated lenses, sunglasses, crystals). It can measure from 0% to 100%, and 1% or 5% increments.



### Fine Marking Device

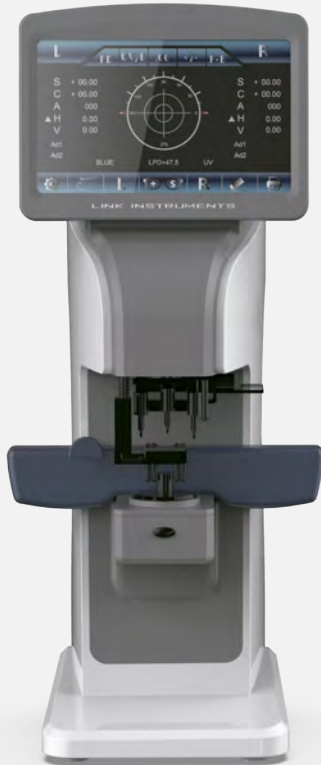
Precise structure design and assembly, excellent operating feel with strong stability, the center marking position won't move for long-time use.

# TECHNICAL SPECIFICATIONS

Sphere	0~±25m, 0.01/0.06/0.12/0.25m steps
Cylinder	0~±10m, 0.01/0.06/0.12/0.25m steps
Axis	0-180° (1°step)
Addition	0~±10m, 0.01/0.06/0.12/0.25m steps
Prism	0~0.01cm/m steps
Cylinder	+, +/-,-
Prism	X-Y, P-B
Contact lens	Soft/hard lens



# Häns Heiss



## Auto Lensmeter **HLM-6047**

v.0.1 - 2020/MAR

DISTRIBUTED BY



**MERCOFRAMES OPTICAL CORP.**

📍 5555 NW 74 AVE. Miami, FL 33166

📘 /mercoframes

✉ sales@mercoframes.net

🌐 www.mercoframes.com

☎ 305-882-0120 Whatsapp

🛒 www.mercoframesusa.com