



# Operation Manual

UNILAB \_for LAB/SHOP



## MERCOFRAMES OPTICAL CORP.

📍 5555 NW 74 AVE. Miami, FL 33166    📘 /mercoframes  
✉ sales@mercoframes.net    🌐 www.mercoframes.com  
☎ 305-882-0120 Whatsapp    🛒 www.mercoframesusa.com

Revision 1.01 2018-09-19

---

Before use this instrument, be sure to read this manual collectively.

## Table of Contents

**\*Please proceed in the following order:**

1.	Install Programs .....	3
	1.1 For Shop .....	3
	1.2 For LAB .....	3
2.	Connecting & Setting with equipment .....	4
	2.1 Edger .....	4
	2.2 Tracer .....	5
3.	How to run .....	7
	3.1 for shop .....	7
	3.2 for LAB .....	10

### things that need

- A. RS-232 cable .....2EA
- B. USB to serial cable .....2EA
- C. Rockey2 Dongle for Shop/LAB

#### Program installation environment

- A. Microsoft visual c++2015 Library

For 32-bit OS:

[http://download.microsoft.com/download/9/3/F/93FCF1E7-E6A4-478B-96E7-D4B285925B00/vc\\_redist.x86.exe](http://download.microsoft.com/download/9/3/F/93FCF1E7-E6A4-478B-96E7-D4B285925B00/vc_redist.x86.exe)

or mfc\_error folder

For 64-bit OS:

[http://download.microsoft.com/download/9/3/F/93FCF1E7-E6A4-478B-96E7-D4B285925B00/vc\\_redist.x64.exe](http://download.microsoft.com/download/9/3/F/93FCF1E7-E6A4-478B-96E7-D4B285925B00/vc_redist.x64.exe)


or mfc\_error folder

# 1. Install Programs

## 1.1 For shop

A. Run the  setup file in the  folder.


B. Proceed with the installation.

C. After installation, check that the desktop has  icon.

## 2.2 For LAB

A. Run the  setup file in the  folder.

B. Proceed with the installation.

C. After installation, check that the desktop has  icon.

## 2.Connecting with equipment

### 2.1 Edger

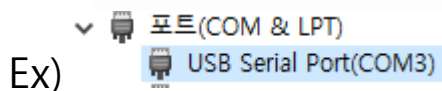
A. Connect the PC and the Edger by connecting the USB to serial and RS-232 cables as follows:



Connect the rs-232 to the area marked with the red box.

[Back of Edger]

B. Check the connected port in Device Manager.



### C. Edger Settings



Menu-> Arrow button to go to screen [Total Parmeter 3 ]

D. After completing the setup, turn off Edger

## 2.1 Tracer

A. Connect the PC and the Tracer by connecting the USB to serial and RS-232 cables as follows:



Connect the rs-232 to the area marked with the red box.

B. Check the connected port in Device Manager.

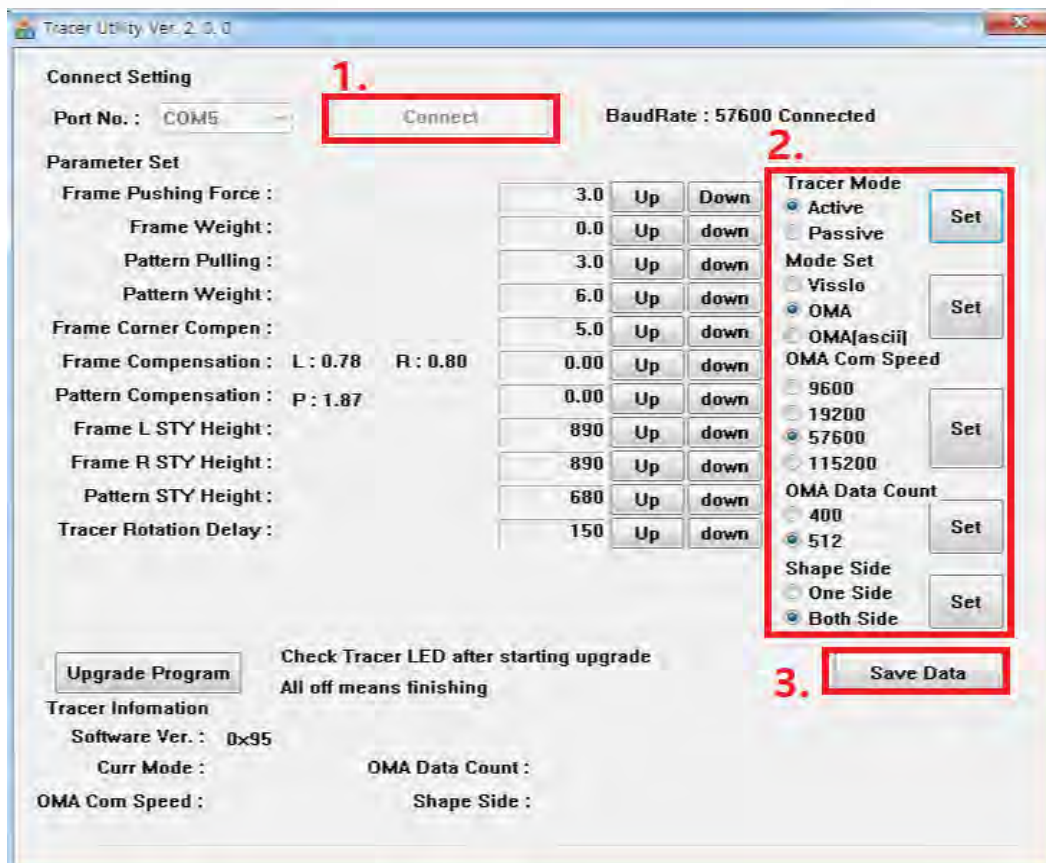


[COM5 ->Tracer, COM3-> Edger]

C. Turn on the Tracer power.

D. Run the  TraceApp program in the folder  AIT .

E. Set the port of the Tacer checked in 'B.' and click Connect to set it as follows. (It is COM5 in this manual. )



F. Run the program again and press the Connect button to verify that the settings are saved correctly.

G. Turn off the Tracer

### 3. How to run

#### 3.1 for shop

A. Insert the Rockey on the PC with the letter S and run the UNILLAB\_for Shop program.



[Rockey2 for shop]

B. Set it to the port of the Tracer you checked and start the connection.



[Start button pressed on the screen]

C. Activate the tracer.



D. Check UNILAB for data entry as follows:

(If a TODO error occurs, run the program again and trace it later.)

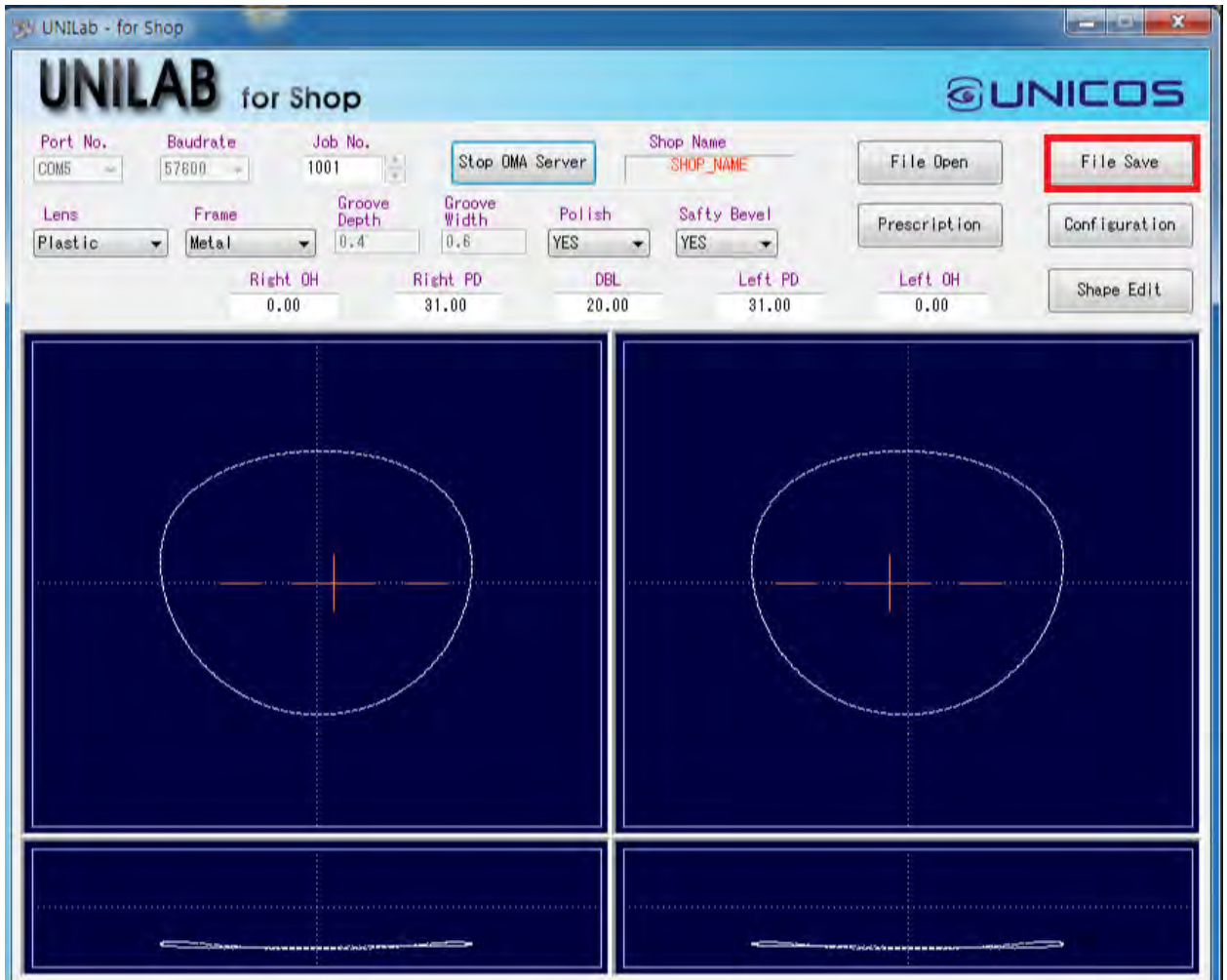
– Will be fixed later



And presse 'OK' button



6. Click 'File Save' button



\*Click on the 'Configuration' button to find the stored location.

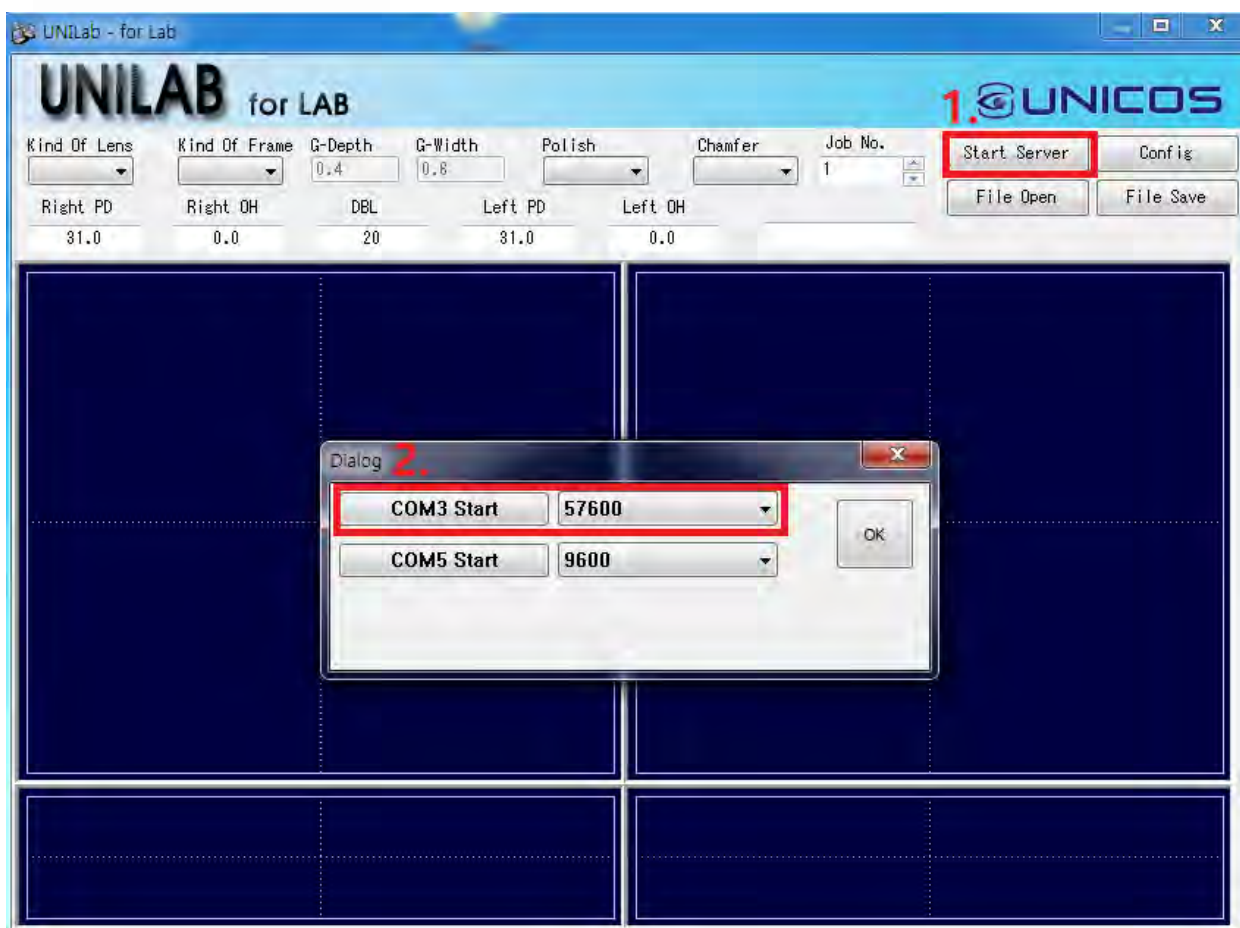


### 3.2 for LAB

1. Insert the Rockey on the PC with the letter L and run the [UNILLAB\_for LAB] program.



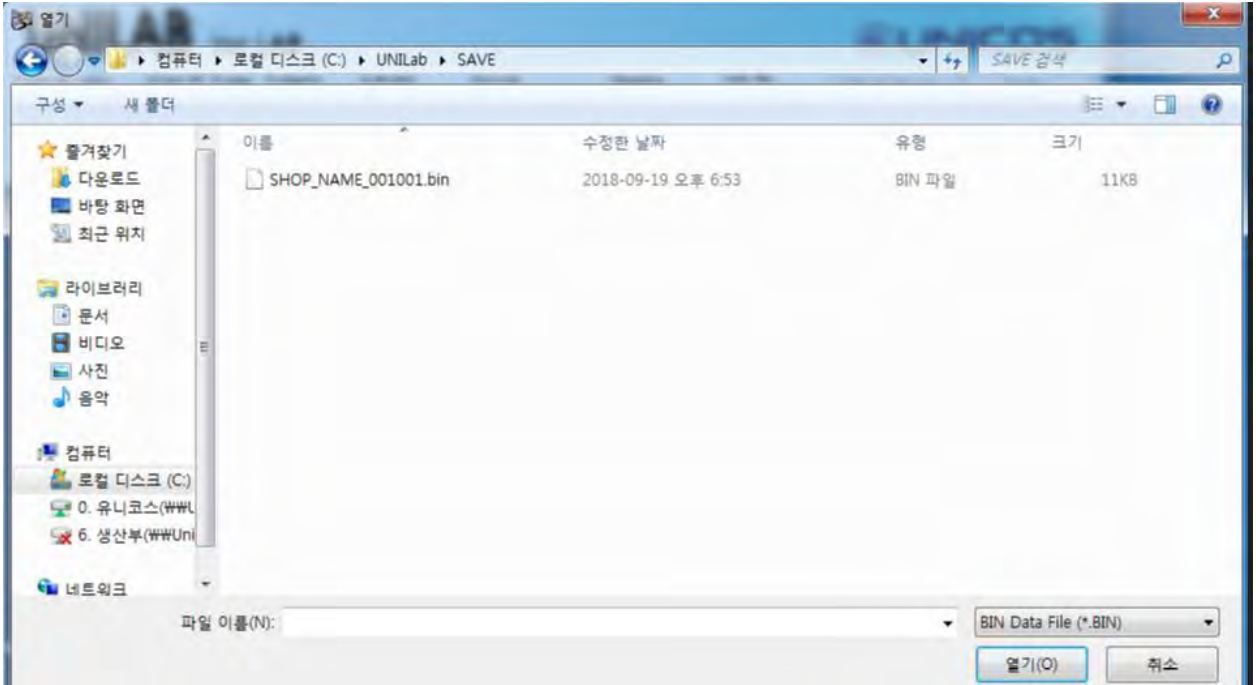
2. Click the port associated with the Edger, adjust the baud rate, and click start.



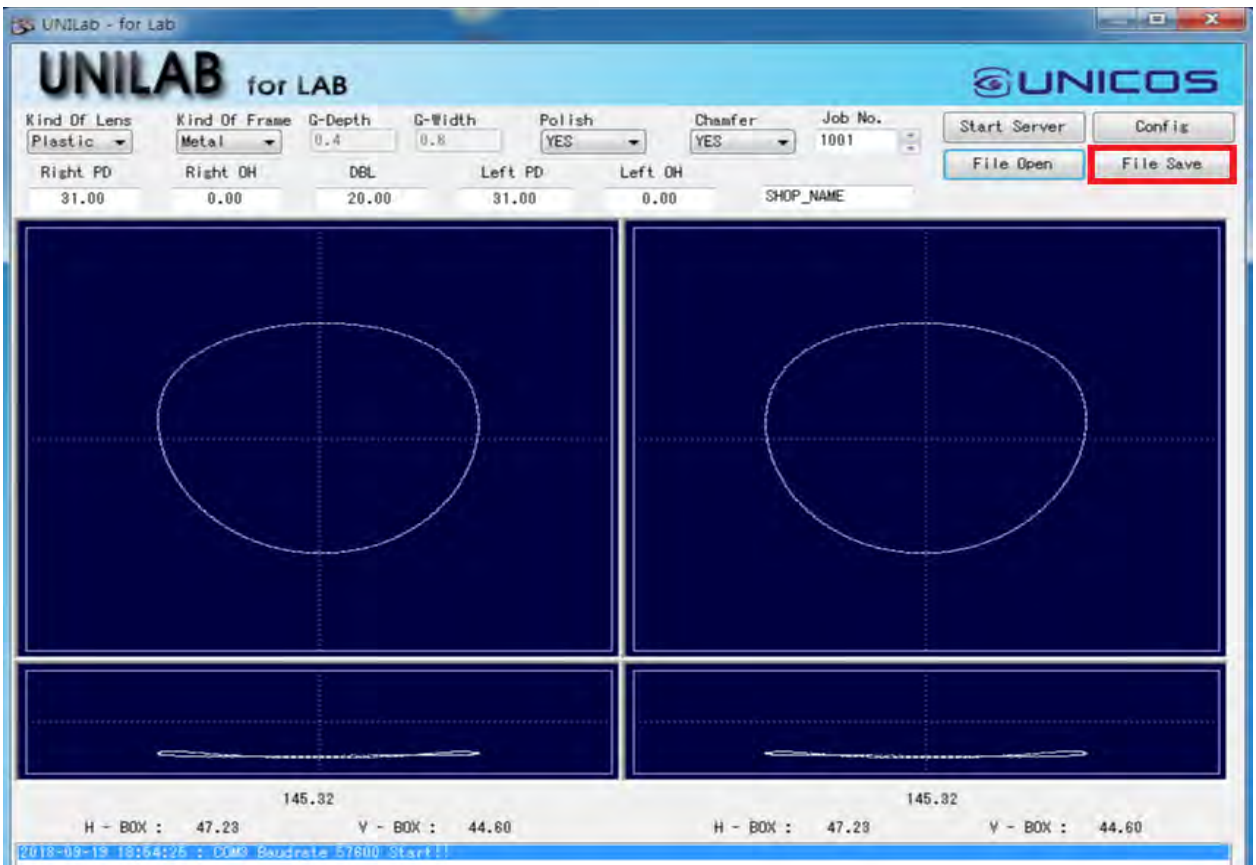
3. Turn on Edger.

\*If it goes well, you can check that [Check Oma status ->( 0 ) ] message and Beep sound


4. Load the saved file from the Tracer



and click the 'File Save' button.





5. Press the  button on the Edger to equalize the data and job number using the arrow button, then press



the  button.



Check Oma status ->( 0)

