

One vision, Two sharp eyes with Our Innovation

TL-7000/ TL-6000

Auto Lensmeter

Precise measurement using new measurement technology



- Hartmann sensor wavefront technology
- UV/Blue light measurement
- Lens mark recognition support
- Simple power mapping
(TL-7000 recommended)
- LAN and RS-232C connection



One vision, Two sharp eyes
with Our Innovation

TL-7000/TL-6000

Auto Lensmeter



Wavefront technology with Hartmann sensor (117 points)

Using 117 point Hartmann sensor wavefront technology in the TL-7000/6000, measurement accuracy of vertically narrow progressive lenses has markedly improved.

Simultaneous measurement of UV/Blue light and power

By emitting measurement light, UV light (375nm) and Blue light (465 nm) simultaneously, it is possible to check UV/Blue light transmittance as well as conduct power measurements.

Lens mark recognition support

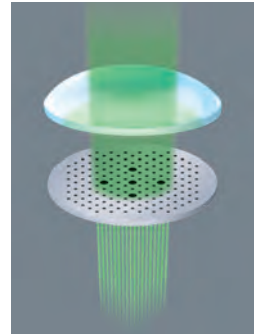
Displaying the grid patterns on the screen will help recognition of lens marks. Grid patterns are selectable.

Simple Power Mapping

With the power mapping function, a lens-shaped simple map will be displayed. (For precise power mapping, the use of PD value and L value is recommended, an exclusive function of TL-7000.)

LAN and RS-232C connection

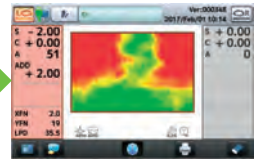
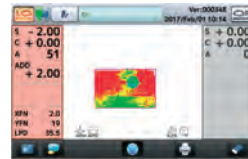
Output the measurement data from each port of LAN and RS-232C.



Hartmann sensor



Lens mark assist



Simple power mapping

TL-7000/TL-6000 SPECIFICATIONS (other than specified items, specs are exactly the same)

Measurement Range

Spherical power (SPH)	+/- 25D
Cylindrical power (CYL)	+/- 10D
Axial angle (AXIS)	0 to 180 degrees
Additional power	-2 to +10D
Prism power	0 to 15 Δ

Increment

Diopter	0.01/0.06/0.12/0.25D
Prism	0.01/0.06/0.12/0.25Δ

Wavelength

535nm

Diameter of the lens

φ20 to 120 mm
more than φ5mm for CL
40 to 86 mm (step:0.5mm)
(for TL-7000 only)

Pupillary Distance

Measurement Object

Spectacle lens, Contact lens,
Optical lens

Transmittance of UV

The peak of the wavelength is 375nm

Transmittance of Blue light

The peak of the wavelength is 465nm

Display

7-inch-wide color TFT with touch panel

Printer

Thermal printer

External communication port Dimensions and Power Source

Paper width 58mm
RS-232C, USB3.0, Ethernet

Dimensions (when LCD is tilted)

188(W) x 240(D) x 430(H) mm

Weight

Approx. 5.5kg (12.1lb)

Voltage

AC 100V-240V

Frequency

50/60Hz

Power Consumption

40-50VA



MERCOFrames OPTICAL CORP

5555 Nw 74 Ave. Miami, FL 33166 305-882-0120

www.mercoframes.com sales@mercoframes.net