



Welch Allyn MicroTympanometer[®]3 Portable Tympanometric Instrument



Fast, easy and reliable
tympanometry for all ages

WelchAllyn[®]

Advancing Frontline Care[™]

Get accurate patient data for any age with the Welch Allyn MicroTym[®]3

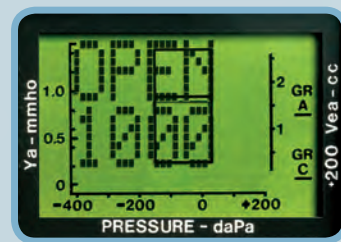


Now with 1,000 Hz quick-interpretation mode for infants under 6 months

Speed, accuracy and ease of use combine to give you the perfect instrument for your practice.

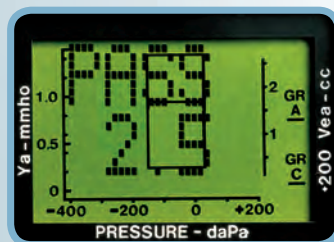
- > Features 1,000 Hz quick-interpretation mode for testing infants under the age of 6 months
- > Test in seconds—ideal for young or uncooperative patients
- > Convenient cards and sleeve attach to charging base for easy documentation of 1,000 Hz results
- > Foreground and background contrast LCD screen for easy viewing
- > Three optional forms of information available for 226 Hz—tympanogram, numerical and interpretive data—making it flexible for your needs
- > Compare middle ear function measurements side-by-side with easy-to-use graphs (226 Hz only)
- > Tests print automatically or on-demand and can produce multiple copies for parent consultation or referral (for 226 Hz only—printing not available for 1,000 Hz)

READY

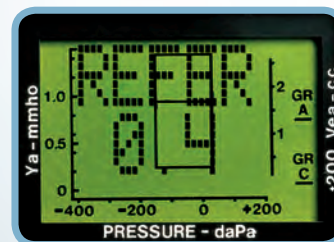


1000Hz MODE

RESULTS



PASS



REFER

In today's fast-paced practice, you need dependable equipment that is easy to use and provides you with dependable patient information. Appropriately diagnosing otitis media is now made easier with the MicroTym3. Whether fluid in the ear is visible or not, the MicroTym3 produces an accurate, objective measurement of middle ear status for patients of all ages—including infants less than six months.

In addition to otitis media, the MicroTym3 also helps detect these other pathologies:

- > Perforated tympanic membrane
- > Patent tympanostomy
- > Ossicular disruption
- > Otosclerosis
- > Tympanosclerosis
- > Cholesteatoma



93650 MicroTym3 Set (includes handle, printer/charger, extra paper and tips)

Technical Specifications

Probe Tone

226 Hz Amplitude: 85 ±3 dB SPL

1,000 Hz Amplitude: 83 ±3 dB SPL

Frequency Accuracy: ±2%

Total Harmonic Distortion: 3% Maximum

Signal Type: Continuous Sinusoid

All specifications measured in an ANSI HA-1 (2.0 cc) coupler.

Pressure Measurement System

Direction of sweep: positive to negative pressure

Sweep Rate: 400 daPa/sec average during data acquisition period

Range: +200 to -400 daPa

Display Resolution: 20 daPa

Accuracy: ±15% or ±10 daPa, whichever is greater

Compensation: Auto-zero every test cycle

Admittance Measurement System

226 Hz Mode:

Range: 0.2 to 4.0 mmho total

0.0 to 1.5 mmho for Ya

0.2 to 2.5 cc for +200 Vea

Accuracy: ±0.1 mmho or ±5%, whichever is greater

Positive tail compensation

1,000 Hz Mode:

Range: 0.9 to 16.6 mmho total

0.0 to 6.5 mmho for Ya*

0.2 to 2.5 cc for +200 Vea

Accuracy: ±0.4 mmho or ±5%, whichever is greater

Negative tail compensation

*for ear canal volumes ≤2.0 cc

Display Resolution:

0.1 mmho for Ya

0.2 cc for +200 Vea

Weight

Handle: 0.61 lb/0.28 kg

Printer/Charger: 3.98 lb/1.81 kg

Regulatory

The MicroTym[®]3 complies with the following standards based on the most recent revision available at the time of design:

UL 60601-1

CAN/CSA C22.2 No. 601.1-M90

EN/IEC 60601-1

EN/IEC 60601-1-2

ANSI S3.39 – ANSI Type 4 instrument

IEC 60645-5 – IEC Type 3 Instrument

U.S. Patent No. 5,383,097, Patent Pending

Ordering Information

23650 MicroTym[®]3 Handle only (includes handle, battery and tip box with 2 tips of each size)

93650 MicroTym[®]3 Set (includes handle, battery, printer/charger, tip box with 2 tips of each size)

Replacement Tips

24620 MicroTym[®]3 Tip Box with (2) tips of each size

24621 MicroTym[®]3 Tips, (4) extra small 7 mm, black

24622 MicroTym[®]3 Tips, (4) small 9 mm, gray

24623 MicroTym[®]3 Tips, (4) medium 12 mm, blue

24624 MicroTym[®]3 Tips, (4) large 16 mm, green

24625 MicroTym[®]3 Tips, (4) extra large 20 mm, white

Reimbursement Information

Procedures performed with the MicroTym[®]3 may be eligible for Medicare Reimbursement using CPT code 92567 Tympanometry (impedance testing).

A WORD ABOUT THE CODING INFORMATION CONTAINED IN THIS BROCHURE FROM THE CURRENT PROCEDURAL TERMINOLOGY, FOURTH EDITION (CPT[®]).

Please note that the coding information contained here is neither conclusive nor does it ensure that you will be successful in obtaining coverage and/or reimbursement from government and private payers.

Depending on circumstances that will vary from patient encounter to patient encounter, separate reimbursement may or may not be allowed for use of a Welch Allyn product used during a specific procedure or service. Use of the product may be included in the reimbursement for Evaluation and Management services provided by the physician. Please check with the specific payer to confirm whether or not the use of a separate code is acceptable. Welch Allyn does not assume any responsibility for the decisions made by payers regarding payment for procedures involving our devices when the coding information suggested in this brochure is used.

CPT is a registered trademark of the American Medical Association.

CPT Codes © 2008 American Medical Association. All rights reserved. CPT is a trademark of the AMA. No fee schedules, basic units, relative values or related listings are included in CPT. The AMA assumes no liability for the data contained herein. Applicable FARS/DFARS restrictions apply to Government use.



MERCOFRAMES OPTICAL CORP

5555 Nw 74 Ave. Miami, FL 33166 305-882-0120

www.mercoframes.com sales@mercoframes.net

WelchAllyn[®]

Advancing Frontline Care[™]