

**icare**  
**ic100**



THE  
PROFESSIONAL'S  
**CHOICE**



**EASY TO USE:**

- + LOAD, ALIGN AND MEASURE.
- + NO DROPS, AIR OR CALIBRATION NEEDED.
- + CONSISTENT AND REPEATABLE.

**EASY FOR PATIENTS:**

- + NO CORNEAL DISRUPTION.
- + SUITABLE FOR EVERY PATIENT.
- + NOT MADE WITH NATURAL RUBBER LATEX.

NO ANESTHESIA  
NO AIR PUFF



## THE TONOMETER

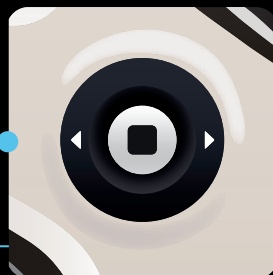
*Icare® ic100 is the professional's choice. The device requires no drops, air or specialized skills for use. The Icare® ic100 uses patented rebound technology to measure intraocular pressure. Its light-weight probe makes momentary contact with the cornea. Icare's proprietary algorithm coupled with state-of-the-art software allows the device to evaluate deceleration, contact time and other motion parameters of the probe when it touches the cornea. The new premium design and user interface brings measuring intraocular pressure to a higher level.*

## KEY FEATURES



### Icare® AMS

Automatic measuring sequence:  
series and single mode  
with one button



### Icare® EasyNav

Advanced navigation  
interface



### Icare® EasyPos

Intelligent Positioning assistant  
for the correct alignment  
of the tonometer

# STUDY FINDINGS

+ *“Intraocular pressure (IOP) readings obtained by an Icare tonometer in our study have shown reasonable concordance with Goldmann applanation tonometry (GAT). Overestimation of IOP measured by rebound technology as compared with GAT is directly proportional to IOP. As the I-care [sic] tonometer measured IOP with good accuracy, it may be considered as an appropriate method for clinical use in normal subjects and glaucoma patients.”*

**JOURNAL OF GLAUCOMA**, December, 2014

+ *“The use of Icare tonometry decreased the need of EUAs to evaluate children with glaucoma and significantly increased successful IOP measurement in clinic.”*

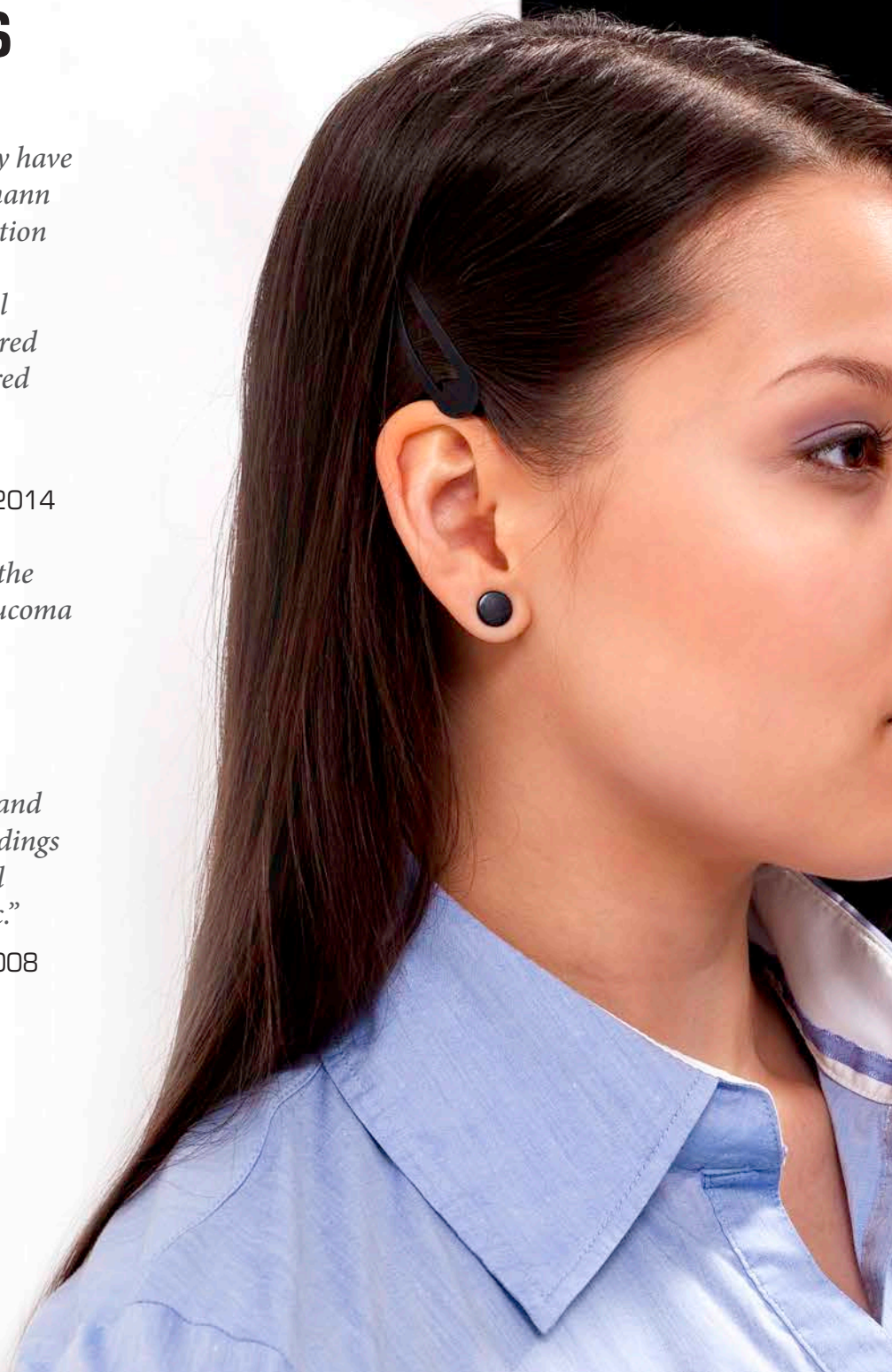
**J AAPOS**, 2012

+ *“The Icare Instrument was easy to use and was able to obtain rapid and consistent readings with minimal training. It was tolerated well by patients with no use of topical anesthetic.”*

**JOURNAL OF GLAUCOMA**, Jan/Feb, 2008

+ *“The Icare is easy to handle and high reliability. The data are comparable with those from the [Goldmann applanation tonometry].”*

**OPHTHALMOLOGE**, April, 2007





icare ic100

## TECHNICAL DATA

<b>MODEL NAME</b>	TA011
<b>DIMENSIONS</b>	24 - 29 mm (W) * 35 - 95 mm (H) * 215 mm (L)
<b>WEIGHT</b>	140 g (without batteries), 230 g (4 x AA batteries)
<b>POWER SUPPLY</b>	4 x AA non-rechargeable batteries, 1.5V alkaline LR6
<b>MEASUREMENT RANGE</b>	7-50 mmHg
<b>ACCURACY</b>	±1.2 mmHg (≤20 mmHg) and ±2.2 mmHg (>20 mmHg)
<b>REPEATABILITY</b> (coefficient of variation)	< 8 %
<b>ACCURACY OF DISPLAY</b>	1 mmHg
<b>DISPLAY UNIT</b>	Millimeter of mercury (mmHg)

# ICARE USA - VISIONARY IN VISION

*Icare USA is a subsidiary of Icare Finland, the original developer and global leader in handheld tonometry. Our patented technology (more than 20 patents and patent applications) combined with ISO 13485 certified quality system has made us a respected player in our field of expertise.*

*The advanced Icare® product line offers reliable, precise and reproducible accuracy when measuring intraocular pressure in both experienced and inexperienced hands. Icare tonometers available:*

**Icare® ic100, Icare® TA01i**



## MERCOFRAMES OPTICAL CORP

5555 Nw 74 Ave. Miami, FL 33166. 305-882-0120

[www.mercoframes.net](http://www.mercoframes.net) [sales@mercoframes.net](mailto:sales@mercoframes.net)

